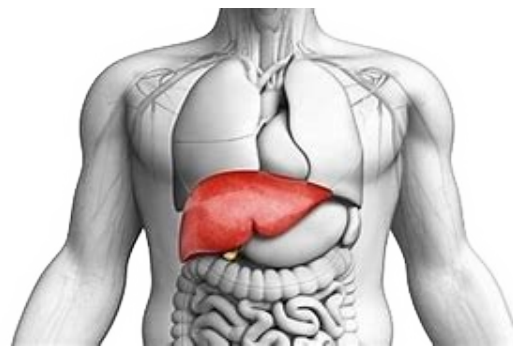
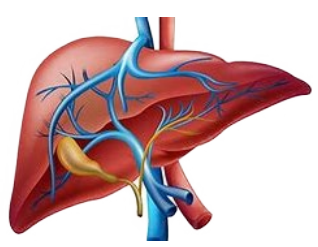


Ancient **RE-INVENTING** series
With **ACRIDHANCER**



NEUTRICEA[®]

Exporting the Goodness of Ayurveda to rest of the World



Nature – has created a stunning canvas of ***colours***

2



-a refreshing range of ***Greens***

-a basket of ***browns***

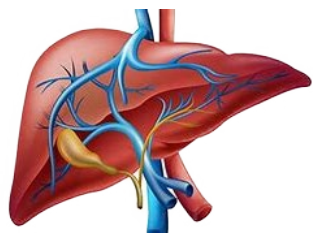


When nature supports.....

.....*it adds life to life*



www.neutricea.com



When **Liver functions** get *deranged* or *likely to be*.....

Due to
Jaundice
Hepatotoxicity by drugs or
Alcoholism

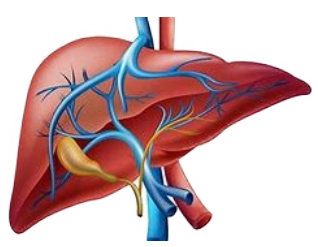
Nature *facilitates restoration* of *deranged*
hepatocytes significantly

prescribe

RENUE

The *Liver Corrective* and **Protective** for *all ages*



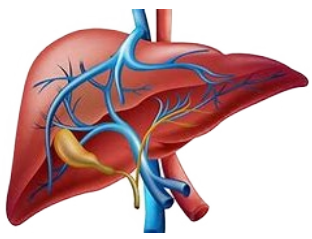


RENU

The *Liver Corrective* and *Protective* for *all ages*
Checks *degeneration*.....Activate *regeneration*

- Prevents* drug induced *liver cell damage*
- Exerts *safe anti-inflammatory* action
- Improves* phagocytosis
- Exerts *choleretic effect*
- Improves* clinical *symptoms*
- Normalises *Liver function* tests
- Inhibits* expression of *hepatitis B* surface antigen
- Reduces* fatty infiltration





RENUVE

The *Liver Corrective* and *Protective* for *all ages*
Checks *degeneration*.....Activate *regeneration*

In

Hyperbilirubinaemia / Jaundice

Acute and chronic hepatitis

Viral hepatitis including HBV infections

Cholestasis and Biliary disorders

Fatty infiltration

Precirrhotic syndrome

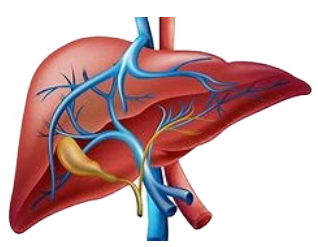
Hepatotoxicity by drugs and chemicals etc.

Adjuvant to anti – Tubercular therapy

As a lipid metabolic regulator

Cholagogue in post cholecystectomy





RENUE

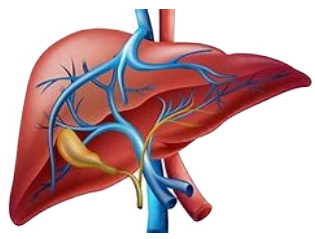
Anti - Hepatotoxic

The *Liver Corrective* and *Protective* for *all ages*
Checks *degeneration*.....Activate *regeneration*

Protect against *hepatotoxicity* by *drugs* (like ATT, Paracetamol, and Alcohol etc.), *restores hepatic drug metabolising enzymes*.

Promotes *regeneration of liver cells* by *stimulating nucleic acid* and *protein synthesis*





RENUE

The *Liver Corrective* and *Protective* for *all ages*

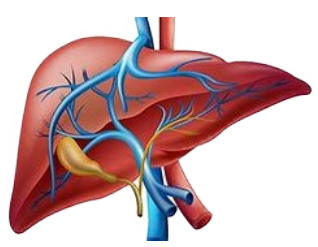
Checks *degeneration*.....Activate *regeneration*

*Anti – Oxidant /
Anti - Inflammatory*

Protect vital tissue system including liver from *free radicals* at DNA and *cell membrane* and also by scavenging action.

Checks inflammatory mediators, protects from *tissue injury* and *cell membrane damage*.





Anti – Viral & Immunomodulator

Inhibits expression of hepatitis B virus e antigen (***HBeAg***) and hepatitis B virus surface antigen (***HBsAg***)

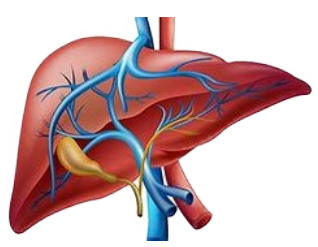
Significantly ***protects*** against ***mixed bacterial*** species, ***improves phagocytosis***

Inhibits reaction between ***HBsAg*** and ***HBNs***

RENUVE

The ***Liver Corrective*** and ***Protective*** for ***all ages***
Checks ***degeneration***.....Activate ***regeneration***





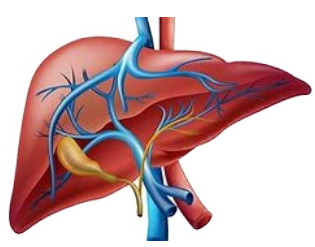
Hypocholesterolemic / Choleretic Effect

Lowers serum LDL and VLDL cholesterol, cholesterol phospholipid ratio and raises HDL cholesterol. Helps in excretion of faecal cholesterol and phospholipids.

RENUE

Increases normal bile flow, exerting anti-cholestatic effect.

The ***Liver Corrective*** and ***Protective*** for ***all ages***
Checks ***degeneration***.....Activate ***regeneration***



Act as potent Anti - Viral

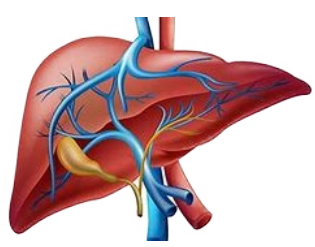
RENUVE

The ***Liver Corrective*** and ***Protective*** for ***all ages***
Checks ***degeneration***.....Activate ***regeneration***

Kutaki exerts promising ***anti-HBs Ag*** like activity and ***HB e Ag*** inhibiting activity by ***PICROLIV*** the active ingredient of Kutaki.
(Ind. J. Med. Res. (B) 92, April 1990, Pp 133-138)

Haritaki and ***Revand Chini*** demonstrated ***anti-viral*** activity against ***Duck Hepatitis B*** virus by ***lowering serum DHBV DNA levels*** by the pharmacologically ***active components*** like ***EMODIN*** and ***CHRYSOPHANIC acid***.
(Phytotherapy Res. Vol. 11, 1997,Pp 179-182) &
(Glossary of Ind. Med. Plants/The Wealth of India, Pub. of C.S.I.R., Govt. of India, New Delhi)





Act as potent Anti - Viral

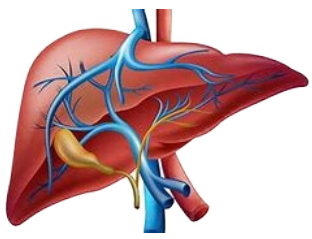
Glycyrrhizin, a major component of *Yashtimadhu* enhances *interferon-g production* in glycyrrhizin treated Human *Peripheral Lymphocytes* in response to *concanavalin A* and to *surface antigen of hepatitis B virus*.

(Anti-Viral Res., 30, 1996, 171-177)(Proceedings of the Soc. for Expt. Biol. and Med., 181, 1986, 205-210)

RENU

The *Liver Corrective* and *Protective* for *all ages*
Checks *degeneration*.....Activate *regeneration*





Act as potent Anti - Hepatotoxic

Bhuiamla exerts *hepatoprotective effect* against drugs, chemicals, paracetamol and country made liquor by *inhibiting Cytochrome P 450* and *decreasing Glutathione*.
(*Ind. J. Exp. Biol.*, 33 (4), 1995, 261-268)

Bhuiamla and *Giloe* exhibit significant *anti-hepatotoxic activity* in terms of *reduction in Liver weight, SGPT, SGOT, S.bilirubin & pentobarbitone*
(*Ind. Drugs.* 30 (7), 1993, 338-341)

RENUUE

The *Liver Corrective* and *Protective* for *all ages*
Checks *degeneration*.....Activate *regeneration*





Act as potent Anti - Hepatotoxic

Bhringraj exerts *hepatoprotective* effect by *counteracting* the *inhibition* of *microsomal drug metabolising enzymes* by *CCl4 induced inhibition* of *amidopyrine N-demethylase* activity.

(J. Ethnopharmacol. (Ireland), 40(23), 1993, Dec., 155-61)

Patients receiving *anti-TB drugs* (rifampicin, isoniazid, pyrazinamide and ethambutol) along with *RENU* showed *improvement* in *appetite*, while *none of them developed Jaundice* during the 4 months period. The *SGOT*, *SGPT* levels were also *within the normal limits*.

(Ind. J. Cl. Prac., Vol.VII, No. 3, 1996 Aug.)

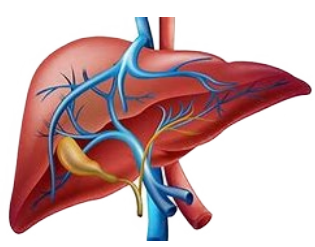
RENU

The *Liver Corrective* and *Protective* for *all ages*

Checks *degeneration*.....

Activate *regeneration*





Act as potent Anti – Oxidant protecting vital organs

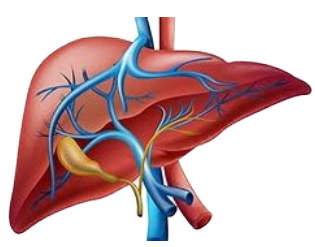
Tulsi checks the *radiation induced depletion of Glutathion (GSH) and anti-oxidant enzyme viz. Glutathione transferase (GST), reductase (GSRx), peroxidase (GSPx) and superoxide dismutase (SOD)* and *maintain there levels within range* thus *reduces* the *lipid peroxidation*, thereby *significantly protecting* DNA and membrane from free radical damage.

(Ind. J. Exp. Biol., Vol., 37 March 1999, 262-268)

RENUUE

The ***Liver Corrective*** and **Protective** for *all ages*
Checks *degeneration*.....Activate *regeneration*





WITH ADDED BENEFIT OF

ACRIDHANCER

Doubles the bio-availability of Nutrients or medicine -By increasing the plasma half-life and delays their excretion for increasing therapeutic effects and aims to correct the imbalance of the three “doshas” (VATA, PITTA, KAPHA psychophysical components of human body) that can lead to disease





Since 1999



**THANKS YOU
DOCTOR**

For your valuable prescription for

RENU

The *Liver Corrective* and *Protective* for *all ages*

